

# REWILD YOUR BUSINESS

**REWILDING  
BRITAIN**



# CONTENTS

**WHY IS REWILDING A STORY OF HOPE?**

**3**

**WHO WE ARE**

**4**

**WHY IS REWILDING GOOD FOR BUSINESS?**

**5**

**YOUR IMPACT**

**6**

**LAND RECOVERY**

**MARINE RECOVERY**

**GROWING THE MOVEMENT**

**RESILIENT ECONOMIES**

**HEALTH AND WELLBEING**

**FUNDING A WILDER BRITAIN**

**12**

**HABITATS AND CARBON**

**13**

**A REWILDING PARTNERSHIP**

**14**

**HOW TO BECOME A PARTNER**

**15**

**HOW OUR PARTNERS SUPPORT US**

**16**

---

**“We share Rewilding Britain’s belief in the benefits of working with communities to develop their own rewilding initiatives. We’re thrilled to partner with Rewilding Britain and help restore our wonderful natural world.”**

**EXPLORE!**

---

# WHY IS REWILDING A STORY OF HOPE?

**We have reached the point where the breakdown of our climate and the biodiversity crisis are urgent threats to both nature and human society. But in rewilding lies a powerful solution.**

Rewilding can boost biodiversity, create carbon sinks, reduce the impacts of climate breakdown such as flooding, and improve water quality. All while offering fresh opportunities for communities and local economies, and for people to connect with nature and wild places.

Facilitating the large-scale restoration of nature to the point that it can take care of itself gives nature – including people – a fighting chance. If nature is given the space to thrive and flourish, wildlife and habitats will benefit and so will we.



# WHO WE ARE

**Rewilding Britain is the only Britain-wide charity dedicated to championing rewilding. This tackles the interconnected nature and climate emergencies, while enabling a wealth of social and economic benefits for people and communities.**

Rewilding achieves more with less – harnessing the power of nature itself to maximise the output of each financial and energetic input. By supporting or partnering with Rewilding Britain, you can feel confident that your investment is driving more impact for nature, people and planet.

**YOU'RE A CRUCIAL  
PART OF OUR  
MISSION**



## SCALING UP REWILDING

We work with a range of experts, organisations and practitioners to commission and share research and evidence.

Our research and reports inspire policymakers and legislators while the support and advice we provide at rewilding sites enables nature recovery projects to get off the ground.



## GROWING THE MOVEMENT

We raise awareness and understanding about rewilding, and ensure that those who want to start the rewilding journey have the tools to do it themselves.

Our Rewilding Network helps to upscale rewilding and is the go-to place for projects across Britain to connect, share and make rewilding happen on land and sea.



## ENABLING REWILDING

We advocate policies and legislation to ensure that rewilding has the political, financial and practical backing it needs.

We partnered with legal experts the Lifescape Project to produce a guide to unpack rewilding and the law, with information on subjects from tax and subsidies to access and liability.

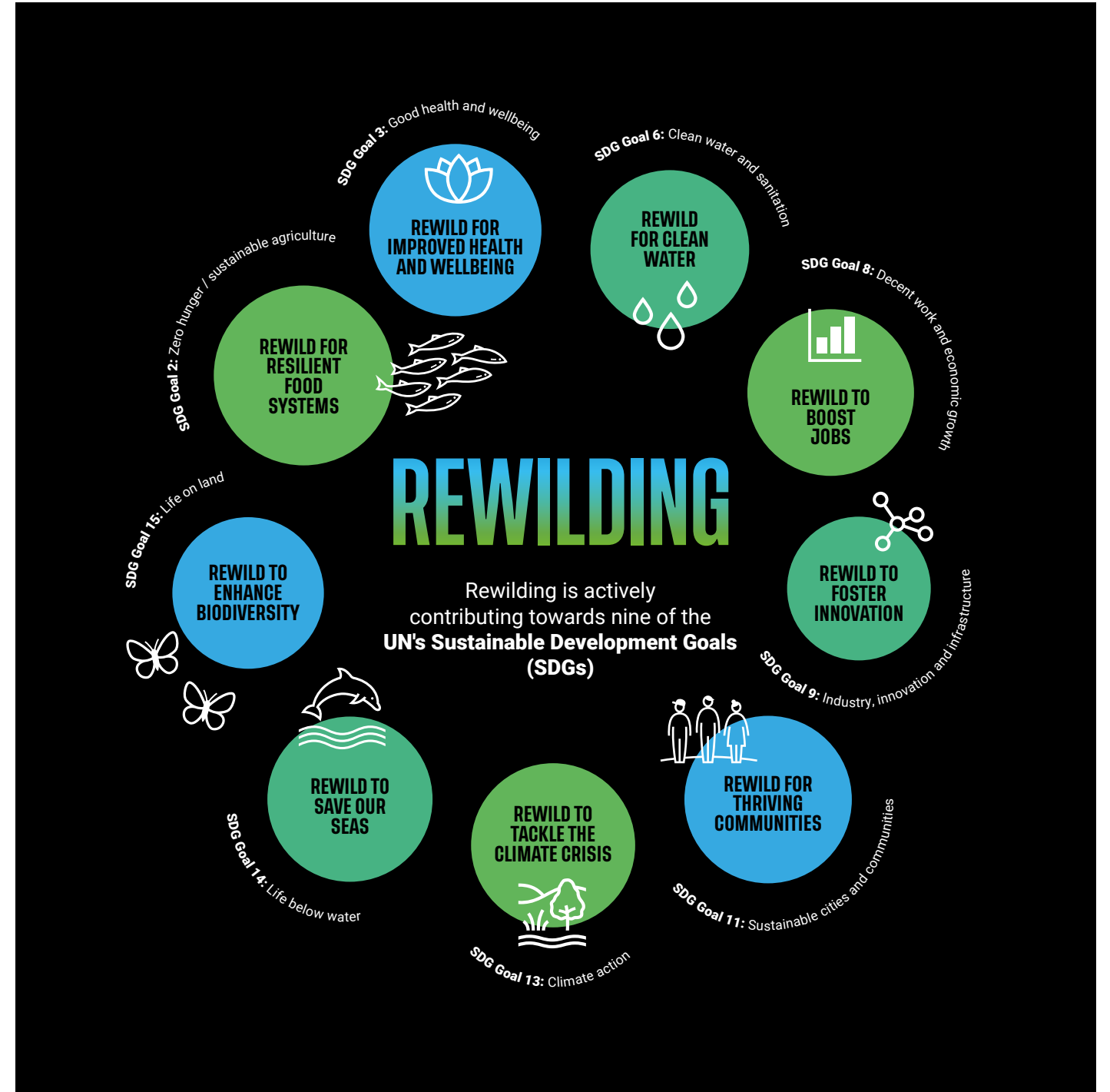
# WHY IS REWILDING GOOD FOR BUSINESS?

There is an increasingly urgent need to address biodiversity loss and climate breakdown. Evidence shows that businesses that fail to engage with this challenge will face significant risks, while businesses that succeed in engaging will be presented with valuable opportunities.

The Taskforce for Nature Related Financial Disclosures references rewilding as a mechanism by which businesses can realise some of the financial opportunities associated with tackling the biodiversity and climate emergencies. Given the strong public support for the rewilding movement, this includes reputational capital.

Increasing numbers of UK businesses are including progress against the Sustainable Development Goals (SDGs) within their own sustainability action plans. The work Rewilding Britain facilitates via our network of rewilding partners contributes to nine of the 17 SDGs, enabling our partners and investors to report significant results.

**83%**  
OF BRITISH PUBLIC  
SUPPORT REWILDING



# YOUR IMPACT

As a Rewilding Britain corporate partner you will be making a positive, measurable social, economic and ecological impact, while creating a wilder and healthier future for all. By joining a movement that is taking action to reduce carbon and increase nature recovery, your support will scale up finance for nature-based solutions.

Read on to learn how investing in Rewilding Britain's work can strengthen your sustainability ambitions.

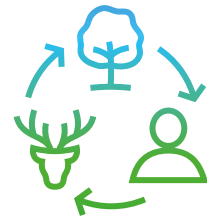
**REWILDING 30%  
OF BRITAIN COULD CAPTURE  
12%+ OF UK EMISSIONS**

Prioritising nature as the most productive use of the land across rewilding areas delivers multiple social, economic and ecological returns.



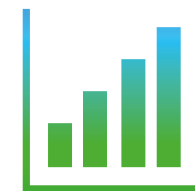
## SOCIAL RETURNS

- Meaningful community involvement in decision-making
- Community cohesion and sense of place
- Health and wellbeing
- Inclusive access to wilder nature
- Educational opportunities



## ECONOMIC RETURNS

- Thriving range of nature-based enterprises
- Diversified livelihoods and revenue streams
- Production of food, timber and other resources
- Local economic regeneration



## ECOLOGICAL RETURNS

- Biodiversity and ecosystem recovery
- Carbon capture/storage and climate resilience
- Flood mitigation
- Healthy, stable soils
- Water quality and retention

# YOUR IMPACT LAND RECOVERY

We urgently want to see an expansion of nature's recovery across Britain, restoring and connecting up areas of rich natural habitat across at least 30% of Britain's land and seas by 2030.

This expansion will reverse biodiversity loss and enable nature to bounce back, including saving a fifth of Britain's species from decline or extinction.

Restoring and protecting native woodlands, peatlands, heaths and species-rich grasslands across this 30% of land could sequester around 12% of current UK greenhouse gas emissions.

## YOUR DONATION COULD...



**£5K**

support innovative techniques to measure carbon capture on a rewilding site

**£10K**

help a rewilding project to control grazing, enabling vegetation to regenerate naturally, boosting biodiversity and native woodland

**£25K**

contribute to rewilding a significant area of land through developing collaborative partnerships that support nature restoration and local communities



## REWILDING NETWORK MEMBER: LANGHOLM INITIATIVE

The Langholm Initiative acquired 2,100ha of grouse estate and woodland for £3.8 million on behalf of the local community through an ambitious fundraising campaign. This created a brand new rewilding area, the Tarras Valley Nature Reserve, which will protect and restore peatlands and ancient woodlands, and provide a haven for rare hen harriers alongside other wildlife.

### DID YOU KNOW?


The Langholm Initiative is the largest-ever community buy-out of land in southern Scotland, having now doubled to over 4,000ha.

# YOUR IMPACT MARINE RECOVERY

Rewilding the seas means taking actions that allow the rich rainbow of underwater habitats, and the vast swirl of sealife, to recover.

Protecting more of these habitats and allowing them to rewild – by placing them off limits to destructive bottom trawling and fishing practices – can help lock up significant amounts of carbon from the atmosphere.

Thriving kelp forests, seagrass beds and oyster reefs can act as a buffer for ocean storms, offering much needed protection against coastal erosion, flooding and helping adapt to the impacts of climate breakdown.

YOUR DONATION COULD... 	
<b>£5K</b>	create marine guides and resources to catalyse and influence activities that will help rewild our seas
<b>£10K</b>	enable the development of mapping tools, to identify areas with the best rewilding potential
<b>£25K</b>	drive action for the banning of trawling and dredging in Marine Protected Areas (MPAs) to support enhanced restoration



## REWILDING NETWORK MEMBER: SEAGRASS RESTORATION, NORTHEAST ENGLAND

Through our Rewilding Innovation Fund we're financing a feasibility study to identify potential areas for seagrass restoration. Climate Action North is spearheading the initiative which is bringing together landowners and managers. They also aim to rewild community areas, making them healthier, livelier and more colourful places for people and wildlife to use and enjoy.

### DID YOU KNOW?

Seagrass captures carbon up to 35 times faster than tropical rainforests.



# YOUR IMPACT GROWING THE MOVEMENT

Rewilding Britain supports and inspires a decentralised, distributed network of rewilding projects across Britain through the Rewilding Network.

With diverse members ranging from landowners and farmers to businesses, NGOs and communities, the Network is a powerful tool in catalysing rewilding. Through a combination of site visits, practical guidance, funding and networking opportunities, the Network encourages and guides people on their rewilding journey, helping them upscale and connect with each other. Help us to grow the rewilding movement, for the benefit of people and the planet.

YOUR DONATION COULD...	
<b>£5K</b>	develop practical guides to enable rewilding projects to achieve greater ecological impact
<b>£10K</b>	contribute to our Rewilding Innovation Fund and boost innovative, locally-led nature recovery across Britain
<b>£25K</b>	deliver in-depth feasibility studies that support the reintroduction of missing native species such as beaver or lynx

## REWILDING PROJECTS AND LOCAL GROUPS

 **986+**  
MEMBER PROJECTS

**25**  
LOCAL GROUPS

 **171,000+** HA  
LAND

 **506** KM<sup>2</sup>  
MARINE

## REWILDING SUPERSTARS

Our Network is home to many species which help fight against climate change.



BISON



WILDCAT



OYSTER



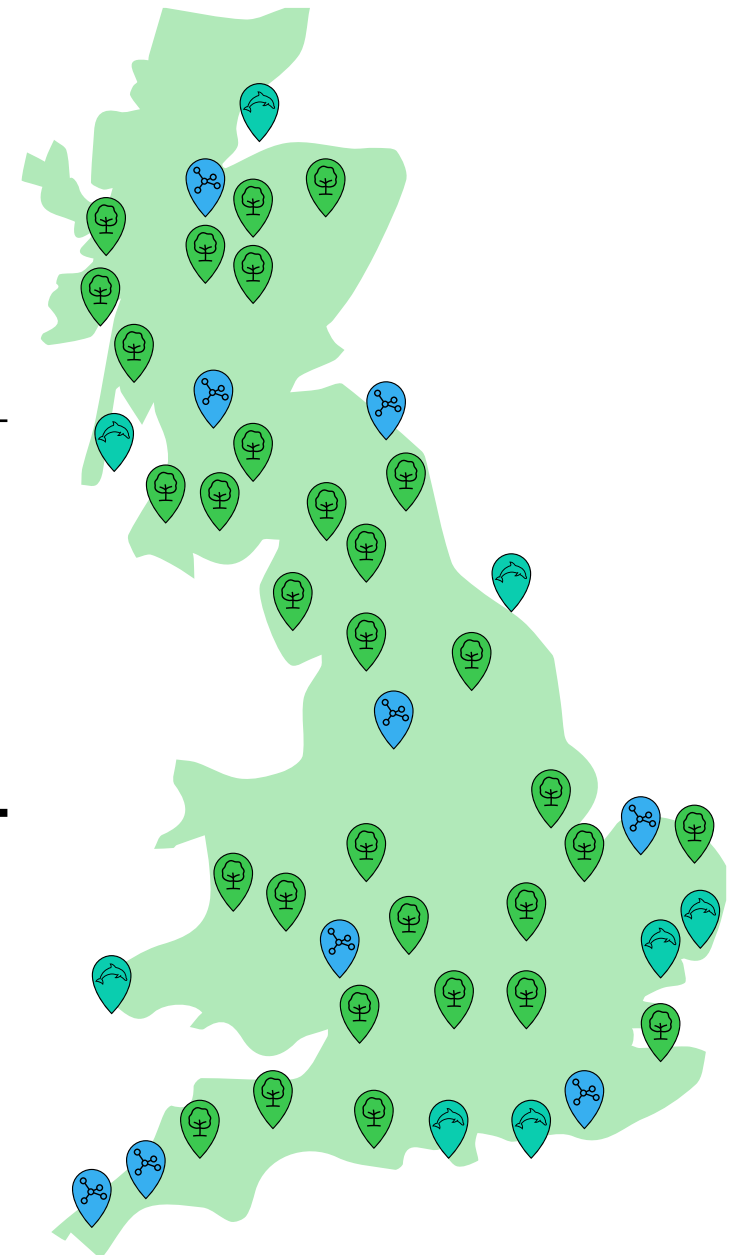
EAGLE



BEAVER



WHITE STORK



This map illustrates rewilding network projects over 600ha

# YOUR IMPACT RESILIENT ECONOMIES

Rewilding Britain believes that a new and thriving ecosystem of employment can be built around the restoration and rewilding of nature.

It's a common misconception that rewilding means fewer job opportunities. Our analysis shows that rewilding at sites across England and Wales led to a 92% increase in jobs and projects led by Network members in Scotland have seen a fivefold increase in jobs. By nurturing dynamic and place-based jobs that are more closely tied to natural environments, we can ensure that rural and coastal communities benefit from wider green investment.

## YOUR DONATION COULD...



**£5K**

support guidance on financing rewilding through toolkits, case studies and factsheets

**£10K**

fund a feasibility study to identify where a rewilding project could develop finance-based incentives and enterprises

**£25K**

enable community connections and empowerment, creating a nature-centric, locally-driven approach to rewilding



REWILDING NETWORK MEMBER:  
**COMMUNITY OF  
ARRAN SEABED  
TRUST (COAST),  
SCOTLAND**

COAST is a world-renowned example of how a community can protect and restore a marine environment under threat from overfishing, and in the process support local businesses. After a concerted campaign to establish Scotland's first No Take Zone, fish stocks have returned to the area — and with it employment.

### DID YOU KNOW?

COAST's new Discovery Centre welcomed over 12,000 visitors in one year.

# YOUR IMPACT HEALTH & WELLBEING

Evidence shows that improving access to a thriving, wildlife-rich environment benefits both physical and mental health. People and communities have always been at the heart of rewilding.

If nature thrives we all thrive. Many of the projects in our Rewilding Network have a strong focus on health and wellbeing, providing people with access to nature's healing powers, with a growing focus on social prescribing and community engagement.

## YOUR DONATION COULD...



**£5K**

support local networks mapping – expanding to include more rewilding projects and focussed rewilding corridors

**£10K**

unlock educational opportunities that enable young people to participate in restoration activities and ecological monitoring

**£25K**

contribute to our Rewilding Challenge Fund, which enables and nurtures a vision for landscape or seascape-scale rewilding



### REWILDING NETWORK MEMBER: **WILDLANDS, MAPPERTON**

This 770ha farming estate in Dorset's Area of Outstanding Natural Beauty started its rewilding journey in 2021. With ecotourism and social prescribing – and farming – now all part of the mix, this is a rewilding journey with people at its heart.

#### DID YOU KNOW?

Referral of patients by the NHS to nature-based programmes is increasing across Britain.

# FUNDING A WILDER BRITAIN

**The Rewilding Innovation Fund and Rewilding Challenge Fund give rewilders a vital opportunity to try something new, to scale-up their ambitions and nurture a vision for landscape or seascape rewilding.**

Both funds ensure that the invaluable knowledge and experience gained by the award recipients are shared with rewilders across Britain through the Rewilding Network.

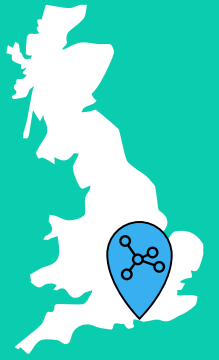
By choosing to support these funds, you can provide seed funding to ground-breaking projects and enable more rewilding to happen, at a larger scale and faster pace.

***“For funders who want to see their money work well in a shared commitment to address the climate and biodiversity crisis the Rewilding Innovation Fund reaches an incredible range of projects throughout the UK. Rewilding Britain is a central force in the environmental movement in the UK and we are proud to work alongside them.”*** Dormywood Trust



## CHALLENGE FUND SUSSEX BAY

In 2024 we awarded £100,000 to Sussex Bay to accelerate this pioneering rewilding project that aims to restore 100 miles of coastline. The initiative will give life to a healthy marine ecosystem in the bay, making it a place where the seascape and rivers flourish. Through a collaborative approach, the project will create exciting opportunities for community engagement, employment, education and a circular economy.



## INNOVATION FUND LYNX TO SCOTLAND

The Rewilding Innovation Fund gives up to £15,000 per project and is supporting the Lynx to Scotland project to address concerns identified in the initial consultation. Reintroducing the Eurasian lynx to Britain could help to reduce the impact of deer browsing on woodland, restore habitats and natural processes, and boost livelihoods.



# HABITATS AND CARBON

## **Carbon offsetting**

Nature is our life support system, our best carbon sink, and our ally in helping to prevent the further escalation of the climate crisis. Evidence shows that healthy, functioning ecosystems and natural carbon solutions like rewilding are as effective and cost less than carbon-capture technologies. A donation to our work will support projects that lock up carbon through natural habitats, contributing to the large-scale change that is vital to decarbonising the UK.

## **Tree planting**

Our first priority is to expand and connect existing native woodland, as this is much more effective than tree planting for carbon sequestration and natural flood management than tree planting. A donation to our work will support projects that are regenerating diverse habitats through varying levels of intervention appropriate to the area – including expanding woodland.

**NATURE IS AN OLD HAND  
AT PLANTING TREES AND  
USUALLY DOES IT BETTER**

# A REWILDING PARTNERSHIP

If you are a business or enterprise that shares our values and is determined to achieve a nature-positive ambition, we would love to work with you.

Flexible, unrestricted funding is the most valuable support you can give. This allows us to spend where the need is greatest and respond to opportunities. We also value the additional benefit of partnership models beyond finance. We collaborate with a wide range of businesses and because we care about the impact of those we accept help from, we screen all our partners to ensure there is alignment with our vision. In return for your vital support, we offer a number of benefits across different annual donation levels.

## Our partnerships can help your business:

- Be part of a growing movement to upscale and accelerate rewilding across Britain
- Deepen your customers' and your team's understanding of rewilding and its benefits
- Reach new audiences through marketing opportunities
- Communicate value-aligned positive PR to customers, increasing loyalty and engagement
- Become a leader on Sustainable Development Goals (SDGs)
- Make a step-change towards your Environmental Social Governance (ESG) ambitions
- Generate financial returns while meeting mandatory and voluntary carbon and nature commitments

PARTNERSHIP BENEFITS	UNDER £5K	£5K - £10K	OVER £10K
Social media follow and mention	✓	✓	✓
Biannual newsletter with examples of rewilding projects and the impact you're supporting	✓	✓	✓
Partners pack, enabling you to tell the story of your partnership using our branding and logo	✓	✓	✓
Acknowledgment in our Annual Report that demonstrates impact	✓	✓	✓
Rewilding Britain website listing		✓	✓
A mutually agreed bespoke Partnership Agreement		✓	✓
A presentation to staff and partners by Rewilding Britain		✓	✓
Opportunities for shared features, blogs, social media content			✓
Employee engagement opportunities, such as campaign actions and fundraising			✓
Invitations to seminars, webinars and events			✓
Bespoke account management to explore opportunities for further collaboration			✓

# HOW TO BECOME A PARTNER

We aim to provide you with a powerful, impactful and accessible way to engage with and support our mission. There are three steps to launch a partnership.

1

## ALIGNMENT

Decide if your approach to climate and the environment aligns with Rewilding Britain's vision.

2

## DONATION AMOUNT

Decide which donation level feels right for you and whether you wish to donate to us via a supported platform\*

### UNDER £5K

We encourage smaller businesses, those looking for a light-touch partnership, or planning to donate under £5K annually, to support us through Work for Good or 1% for the Planet.

### OVER £5K

If you are a bigger business, a 1% for the Planet member, or are interested in a more bespoke partnership, we would like to talk to you directly to discuss your potential opportunities.

## SUPPORTED PLATFORMS\*



This light-touch scheme makes it super-easy for you to make your donation and gives you access to supporting resources. It also saves us time and money – so your donation goes further.



This certified scheme inspires businesses to donate 1% of annual sales through memberships and everyday actions. Your contribution supports our work, and you join a global movement of accountable environmental giving.

3

## A NEW PARTNERSHIP IS LAUNCHED!

# HOW OUR PARTNERS SUPPORT US

We welcome partnerships with responsible, purpose-led businesses which share our values and vision, to help achieve positive change on climate, biodiversity and rewilding.

**Hotelplan**  
UK

Passionate about sustainable travel, Hotelplan UK makes a donation to Rewilding Britain for every booking made for their adventure holidays through Explore, Inntravel and Inghams. They are now aiming to integrate rewilding into their trips and partnerships.

**REPUBLIC  
OF MUSIC**

Republic of Music is supporting rewilding through their Eco-up Scheme, which sees a voluntary levy of 1.5% by clients, which they then match. They are rolling up their sleeves and making changes every step of the way, advocating sustainable practices in music manufacturing.

**lua**

A commercial partner for four years, Lua Ltd donates 10% of profits on key wholesale ranges, inspired by nature and wildlife, to Rewilding Britain.

**BLOOM  
& WILD**

Certified a B Corp, Bloom & Wild are committed to making long-term positive change for their community, and the world around them. As well as sourcing their flowers from responsible growers to measuring their biodiversity and climate impacts, they are supporting Rewilding Britain.



**“At Bloom & Wild, we care wildly about both people and the planet. That’s why we’re incredibly proud to support Rewilding Britain, helping this amazing charity in their mission to restore our landscapes to a wilder, more natural state.”**

**BLOOM  
& WILD**



**BE A PART OF OUR VISION  
BY LEADING ACTION ON  
CARBON REDUCTION AND  
NATURE RECOVERY, AND  
HELP SCALE UP FINANCE FOR  
NATURE-BASED SOLUTIONS.**

**WE ARE PROUD TO PARTNER WITH PURPOSE-LED  
BUSINESSES. PLEASE GET IN TOUCH**

**[DEVELOPMENT@REWILDINGBRITAIN.ORG.UK](mailto:DEVELOPMENT@REWILDINGBRITAIN.ORG.UK)**

**Image credits:**

Lynx © animalphotography.ch/Shutterstock; Glen Affric © Grant Willoughby; Gannets © Richard Sucksmith/scotlandbigpicture.com; Knepp Wildland © Knepp Wildland; Rewilding Network © James Street; Rewilding Finance launch © Anna Moffat; The Langholm Initiative © Shona Dickson; Crab in Seagrass © Richard Shucksmith/Scotlandbigpicture.com; Rockpool @ COAST; Wildlands © Sam Rose; Sussex Bay © Sussex Bay; Lynx © Tomas Hulik/Shutterstock; Glen Affric © Chris Aldridge; Lichen and Moss © Ben Porter; Beavers @ Cabilla Cornwall.

We retain the right to reject support from any organisation or individual whose objectives or activities are incompatible with our own objectives and values.

© Rewilding Britain 2024. Rewilding Britain is a charitable incorporated organisation registered in England & Wales (no. 1159373), and Scotland (no. SC045685). Registered office: The Courtyard, Shoreham Road, Upper Beeding, Steyning, West Sussex BN44 3TN

**REWILDING  
BRITAIN**

